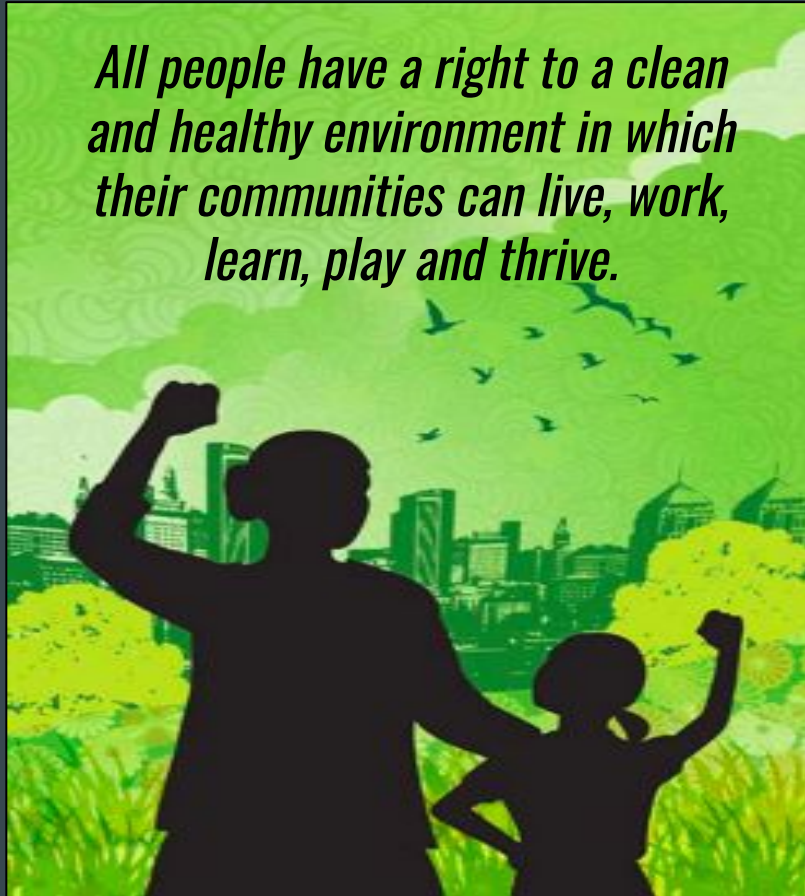




Building Community Resilience to Climate Disasters
Amee Raval, Policy & Research Director, Asian Pacific Environmental Network
Climate Disaster Risks & Inequality Hearing
July 21, 2021

Asian Pacific Environmental Network

All people have a right to a clean and healthy environment in which their communities can live, work, learn, play and thrive.



COVID. Extreme Heat. Drought. Blackouts. Wildfires. Pollution.

“We’ve lost complete control, that there really isn’t a normal anymore.”

LA Times: *“How climate change is fueling record-breaking California wildfires, heat and smog”*

“As fires burn, the smoke and air pollution worsens respiratory conditions for communities that have been plagued with the burden of our polluting industries for generations.”

NBC News: *“COVID-19 and the California fires have a connection. Here’s how to fight both.”*

Traditional Models of Emergency Management Alone Are Insufficient



Fairgrounds are centralized evacuation spaces that are inaccessible without a personal vehicle



Cooling centers offer air conditioning but are limited in offering broader services and relief

The State Needs to Invest in Community-Driven Solutions



“Disaster collectivism models people-powered, heart-centered, socially just relief and long-term organizing and actions that reclaim the right of peoples to define their economies and govern their communities.”

- Movement Generation, Transition Is Inevitable,
Justice Is Not: A Critical Framework for Just Recovery

RESILIENCE BEFORE DISASTER

The Need to Build Equitable,
Community-Driven Social Infrastructure

APEN
ASIAN PACIFIC
ENVIRONMENTAL
NETWORK

SEIU
California
Stronger Together

seiu 2015
California's Long Term Campaign

BLUEGREEN
ALLIANCE

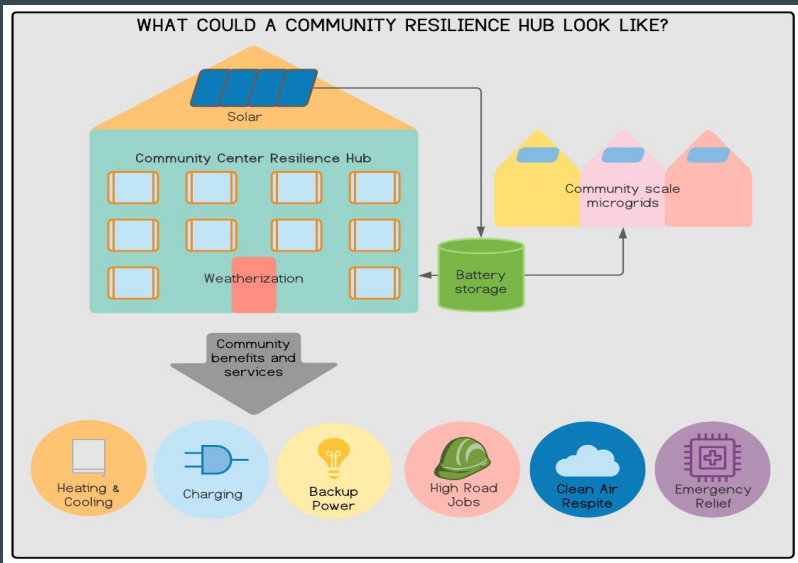
Resilience Before Disaster Report

apen4ej.org/resilience-before-disaster/

Social infrastructure: the services and facilities that secure the economic, health, cultural, and social well-being of the community.

- **Public institutions** e.g., schools, libraries, park and recreation sites
- **Community orgs** e.g., places of worship, youth and senior centers, child care
- **Small businesses**
- **Housing accessible to disadvantaged and vulnerable communities**





Community Resilience Hubs

Spaces where communities gather, organize, and access social services on a daily basis in addition to addressing critical needs during disaster response and recovery.

This includes: **cooling** and **heating**, **electricity** access, **food**, **water**, **medical supplies**, **information** and **comms** access, partner **coordination**

Resilience Hubs:

- Leverage established and trusted community and public facilities.
- Foster community governance and collaboration.
- Integrate workforce development strategies to create high road jobs.
- Target benefits to disadvantaged and vulnerable communities

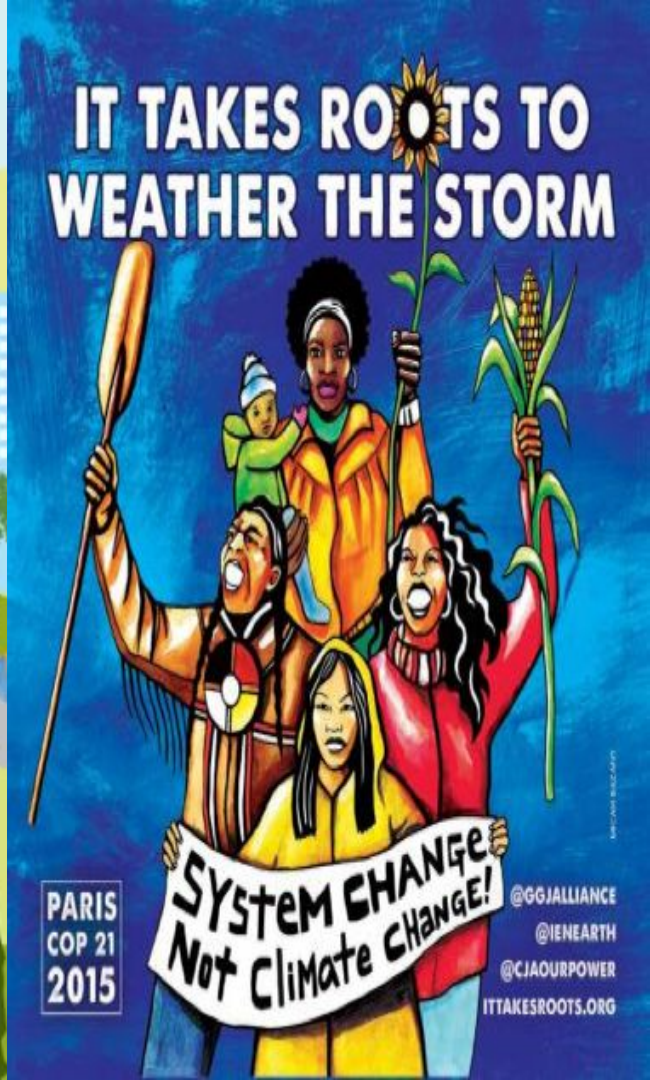




CALIFORNIA
ENVIRONMENTAL
JUSTICE ALLIANCE

TRANSFORMATIVE CLIMATE COMMUNITY

Building Neighborhood-led Climate Equity



PARIS
COP 21
2015

**SYSTEM CHANGE
Not Climate Change!**

@GGJALLIANCE

@IENEARTH

@CIAOURPOWER

ITTAKESROOTS.ORG

PHOTO: SHUTTERSTOCK

2021 KEY COMMUNITY RESILIENCE BUDGET PRIORITIES



PRE-APPLICATION
SUPPORT

\$35M - SGC REGIONAL CLIMATE COLLABORATIVES

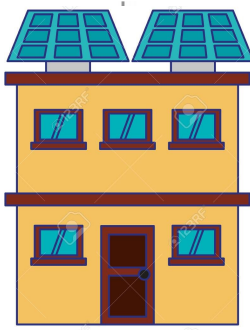
IMPROVED ACCESS TO STATE GRANTS



COMMUNITY CAPACITY-BUILDING

\$350M - SGC COMMUNITY RESILIENCE HUBS

TRUSTED SPACES FOR CRISIS RESPONSE & RECOVERY



WHOLE BUILDING UPGRADES

\$500M - SGC TRANSFORM. CLIMATE COMMUNITIES

LONG-TERM ENVIRO + ECONOMIC SUSTAINABILITY



NEIGHBORHOOD-SCALE INVESTMENTS

CAPITAL PROJECT
GRANTS